

mec

www.apem.com

INCREASE SAFETY OF YOUR HANDHELD- OR LIMITED SPACE DEVICE
WITH THE SMALLEST 2-POLE SMD COMPONENT ON THE MARKET

Dualmec 6C Series

- Space-saving size
- Added security with double confirmation
- High performing tactile switch
- Many design options with standard cap selection

PANEL SWITCHES

PCB SWITCHES

LED INDICATORS

JOYSTICKS

PANEL SOLUTIONS



CORE TARGETS

DUALMEC IS EXCELLENT FOR:

- Material handling vehicles
- Medical equipment
- Mining equipment
- Military communication equipment



Dualmec 6C Series

CUSTOMER BENEFITS

- Increased safety with double confirmation
- Compact
- Reduced investment thanks to many design options with standard caps
- Easy to align the front panel and PCB due to the floating caps
- Accurate switch placement due to positioning pins

END-USER EXPERIENCE

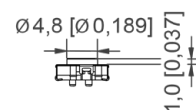
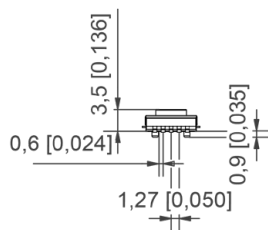
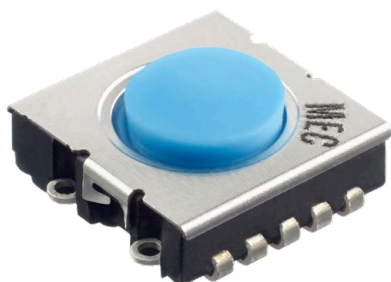
- A solution that is safe to use
- Good tactile feel
- Added security

TECHNICAL FEATURES

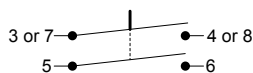
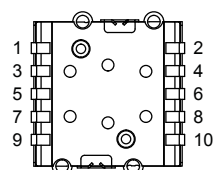
- 8 x 8 x 3.5 mm
- Robust
- Lifetime of 1,000,000 cycles
- B10d - 1,000,000 cycles
- Sealed to IP67

CUSTOMIZATION POSSIBILITIES

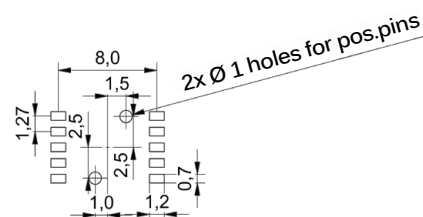
The Dualmec switch has a selection of caps that can be customized by color and print. It is also possible to get fully customized keycaps.



CIRCUITRY



PCB LAYOUT



CLICK BELOW FOR FURTHER INFO:

[3D files](#)

[Datasheet](#)

CONTACT: _____

MORTEN HØJDEVANG: morten.hojdevang@apem.com - +45 4474 6227

 **APEM**
an IDEC company

www.apem.com